

Q'leesia
by **kəith&kym**
concepts X
Spencer Linen[®]

| Tablecloth | Napkins | Chair cover |
| Linens | Cotton | Cotton Feel | Polyester |



Q'leesia

LY2018

What is tablecloth?

Part 1 – Tablecloth and measurements

Part 2 – Accessories

Part 3 – Where & What to sell in the hotel..

Part 4 – Fabrics



Introduction

- What is tablecloth?



A general
term for all
type of
tablecloths

Round table



Standard tablecloth drop

Overlay

Round tablecloth– 14"-15" drop per side.
Square tablecloth – 10"-12" drop.

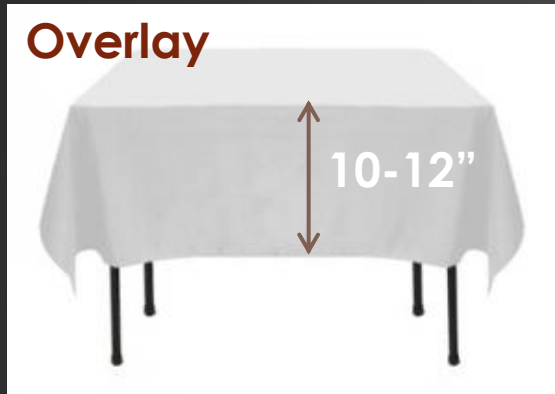
Underlay

Round tablecloth – 1" above ground on both sides or 29" drop.



Square or Rectangular table

Overlay



Overlay

Square or rectangular tablecloth – 12"-21" drop per side.



Underlay

Square or rectangular tablecloth – 1" above ground with sheared corner and marking.

Shear corners

Underlay-with shear corners



Underlay without shear corners
- Tablecloth is too long on each corner.



Underlay with shear corners
- Neat corners.

Types of Fitted Tablecloth



Fitted tablecloth with slits



Fitted tablecloth 3 sided



Fitted tablecloth
- 4 sided, tuck to legs



Fitted tablecloth
- 3 sided, tuck to legs



Fitted tablecloth with pleats



4 Sided tablecloth – box up

Cocktail tablecloth



Organza overlay



Organza overlay
Drop per side: 14" -15"

- Standard ex stock pattern
- MOQ – 120-200pcs depending on colour and size.

L17M3



Organza overlay
Drop per side: 10" -12"

Organza overlay



Floral maroon
with gold
embroidery



Floral khaki



Floral black with
gold embroidery



Spiral khaki



Lilac lines



Silver lines



Square spiral sand

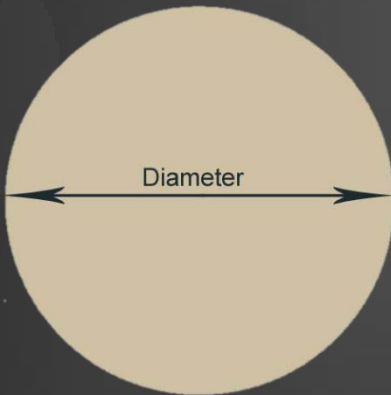


Square spiral
black & white

Moulton



Bottom view
-with elastic band



Size
- Custom made to fit table size.



Function – silencer
- Acts as a cushion on the table
- Noise reduction during food service

Table runner



- Single ply or 2-ply.
- Size: 14"-20" width.
- Material: Organza, satin or any polyester material.

Full drop table runner



Half drop table runner with borders

Chair cover design guide

Single piece back and seat for maximum fitting and flexibility



Piping for shape contouring.

Rear or front pleats for comfort and protection from shoes marks

Folded skirt hemming

Baby lock hemming – fast and inexpensive



Price

Inexpensive



Chair cover



Standard chair cover

Fitted chair cover, tuck to legs

Pleated on front and back chair cover

Pleated on left and right chair cover

Chair cover with clip/velcro on the back

Material:

All polyester fabric except cotton and linen

All stretchable material – Celeste or Fuji

All material except fuji and spandex

All material except fuji and spandex

All material except fuji and spandex. Works well with chair with narrow backrest

Chair sash



Gathered sash



Twist sash



Butterfly sash



Silver ring sash



Bow sash



Tassel



Organza full tie back



Organza tie back

Skirting



Box pleat



Shirred pleat – suitable for soft material, e.g: Satin



Accordion pleat

Sales tips:



Package Includes:



(1) Table Topper



(10) Clips



(1) Table Skirt

Skirting size

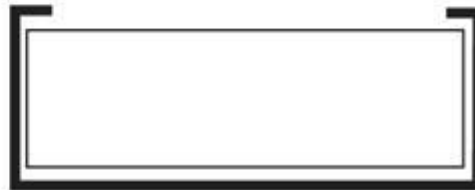
4 SIDE COVERAGE

To skirt all four sides of the table, simply measure and add up all four sides.



3 SIDE COVERAGE

To skirt three sides only, simply measure and add the front and the two sides and add one extra foot to allow for an extra 1/2 foot coverage around each side at the back for optimal appearance.



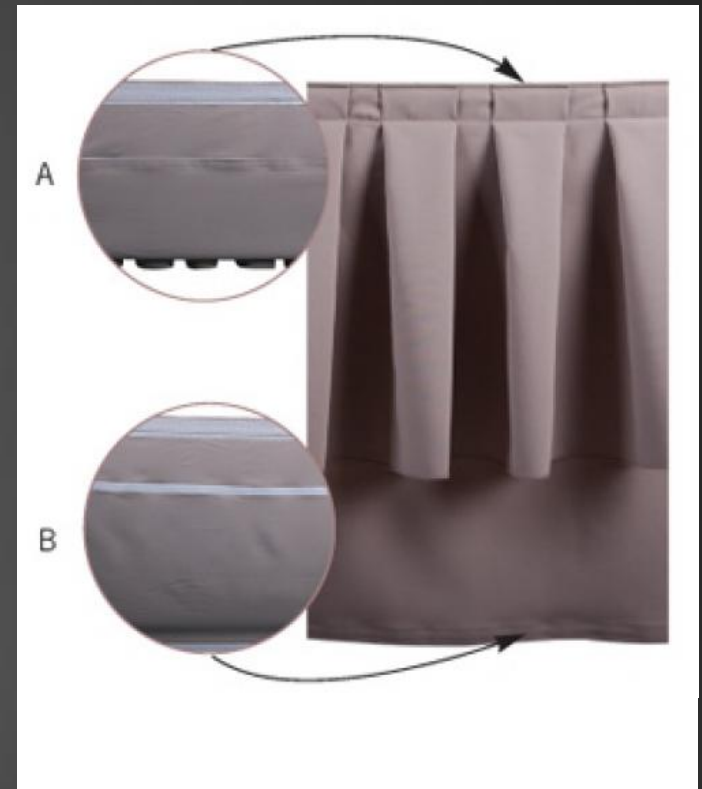
ROUND TABLE COVERAGE

Simply measure the perimeter of the table all around.



Sales tips: Add 6" at the end for Velcro attachment

Stage skirting-Dual height skirting
- Adjustable height for stage



Where and what to sell....

Hotel area	Tablecloth	Table napkin	Cocktail napkin	IBM tablecloth / Conference cloth	Chair covers	Sash	Placemat	Moulton	Tray mat	Skirting	Coaster	Table runner
Lobby lounge		■	■						■		■	
Banquet hall	■	■		■	■	■		■		■		■
Executive lounge	■	■	■		■		■	■				
All Day Dining	■	■	■		■	■	■	■			■	
In Room Dining	■							■	■			■
Signature restaurant	■	■			■	■	■	■				■

Q'leesia

LY2018

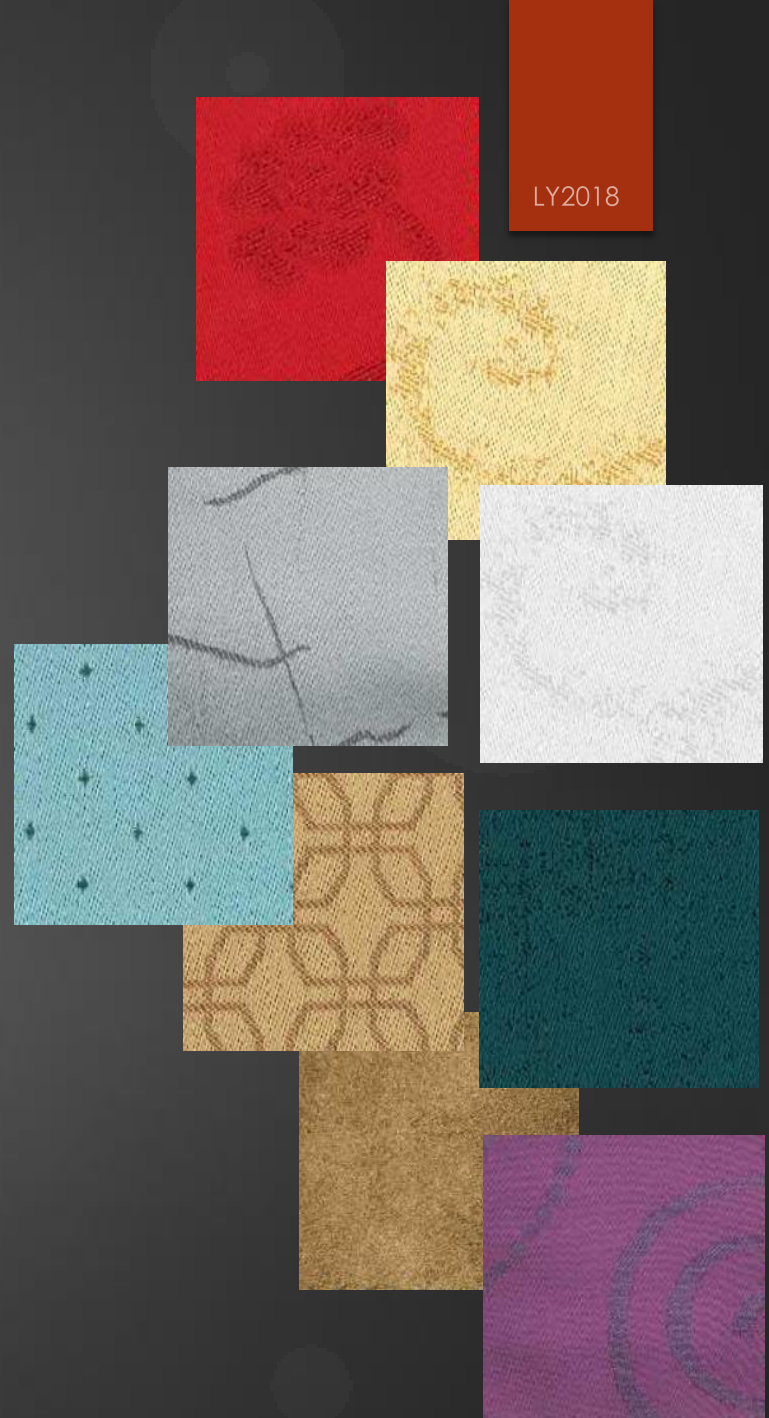
What is tablecloth?

Part 1 – Tablecloth and measurements

Part 2 – Accessories

Part 3 – Where & What to sell in the hotel..

Part 4 – Fabrics



100% Linen

Pure Linen – high end material. For luxury hotels

Weak colour fastness compare to Polyester and not suitable for dark colour as it will fade after a few wash

Minimal colour selection

Not suitable for dark colour

Minimal shrinkage level – 3%

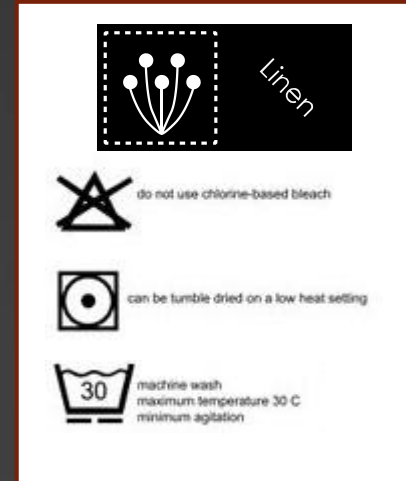
Suitable for:

Tablelinen, table napkin, cocktail napkin, coaster

Hotel:

Grand Hyatt , Hyatt group

Customize colour available upon request and MOQ applicable



60% Cotton + 40% Linen

Cottonlinen

Combination of 2 natural material – cotton & linen

All cotton + linen items will shrink during laundry and we will deliver the finish product slightly larger to accommodate shrinkage . Shrinkage level 3-5%

Weak colour fastness compare to Polyester and not suitable for dark colour as it will fade after a few wash

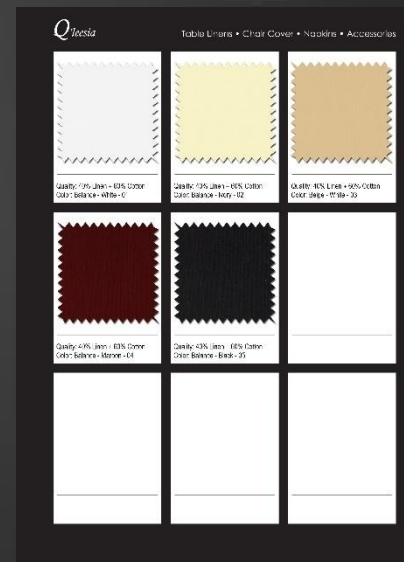
Suitable for:

Tablelinen, table napkin, cocktail napkin, coaster

Hotel:

Rosewood Laos, Sofitel KL, Marriott Marquis BKK

Customize colour available upon request and MOQ applicable



100% Cotton

Material weight: 245gsm, 32/2s

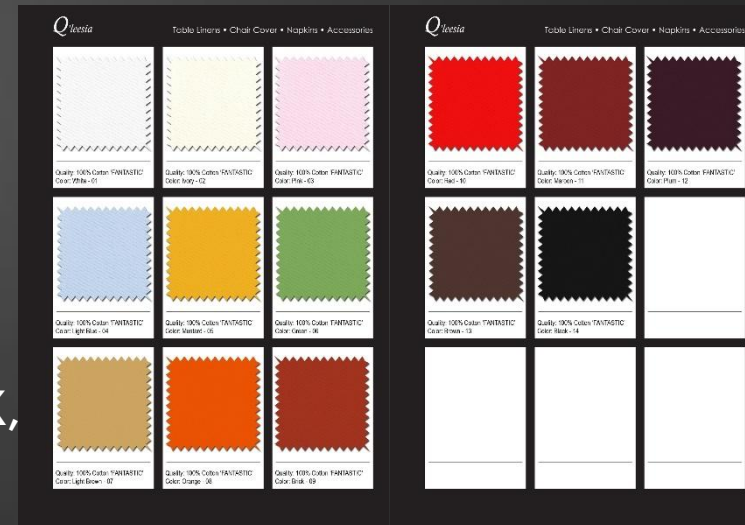
Weak colour fastness compare to Polyester and not suitable for dark colour as it will fade after a few Wash

All cotton items will shrink during laundry and we will deliver the finish product slightly larger to accommodate shrinkage. Shrinkage level 3-5%

Solid colour and yarn dye available

Suitable :
Tablelinen, table napkin, cocktail napkin, coaster

Hotel: Sofitel KL, Marriott Marquis BKK, Crowne Plaza Laos, Mandarin Oriental BKK, Marriott Surawong BKK, Lotte Hotel, Aristo Lao Cai



Cotton Feel

NEW fabric range made of polyester

NO shrinkage, value for money

Multiple colour available

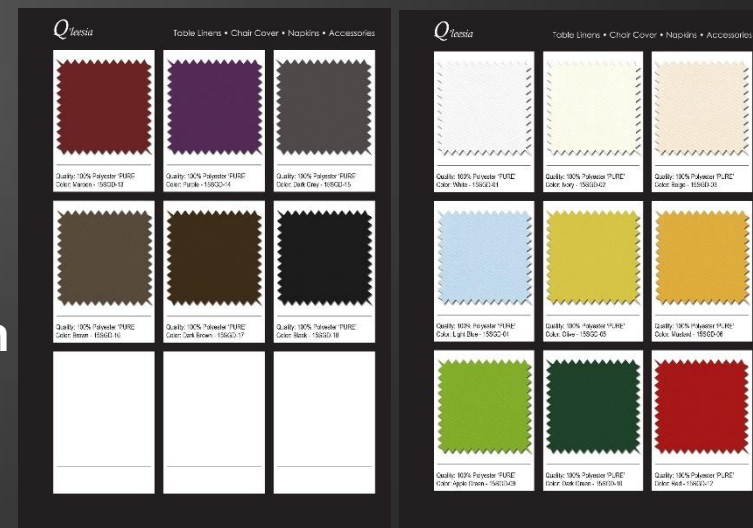
Good colour fastness and water absorption

Suitable for starching

**Suitable for high end hotels or restaurant:
Tablelinen, table napkin, cocktail napkin,
coaster**

**Hotel:
Park Hyatt and Hyatt group hotels,
New World hotels, Grand Mercure Yangon**

**Customize colour available upon request
and MOQ applicable**



Silky Cotton

Inexpensive option. All colours are the same price.
New fabric in the market

Multiple colour available

Good colour fastness and water absorption

Suitable for starching

Suitable for high end hotels or restaurant:
Tablelinen and chair covers

Hotel:
Intercontinental Phu Quoc, New World KL,
Grand Hyatt KL, Park Hyatt Hangzhou,
Shangri La tangjung Aru KK Malaysia,
Hyatt Group in China, Alantis Sanya,
Rosewood Sanya



Customize Border Design

Reversible design and heavy weight material

Customize colour and design available

Cotton feel on the topside and shiny finishing on the reverse side

Good colour fastness and water absorption

Suitable for high end banquet halls

Hotel:

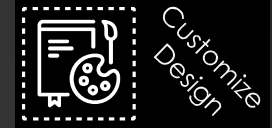
Sheraton Danang – Apec event

Sofitel KL, Grand Mercure Yangon

Customize colour available upon request and MOQ applicable

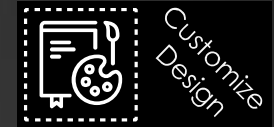


Customize Border Design

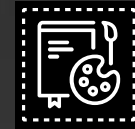
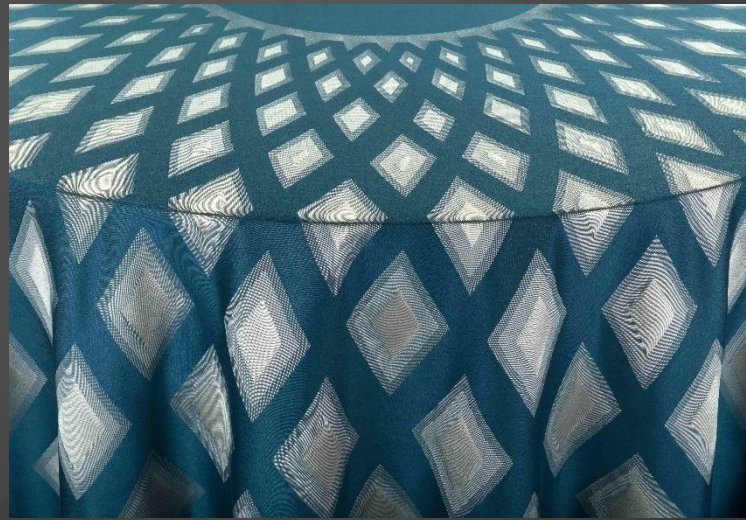


Reversible design
Each flower pattern indicate a sitting position
Various colour available

Customize Border Design



Customize Border Design



Customize
Design

Customize Border Design



Spandex and Lycra

All spandex and lycra base material

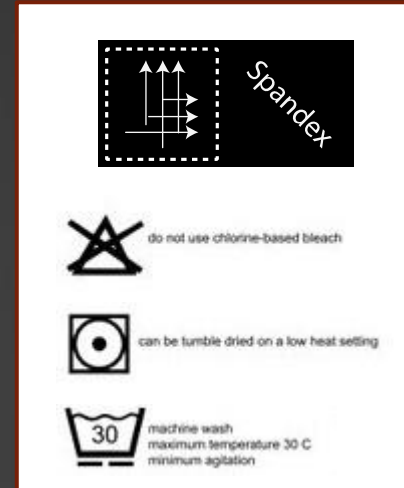
Suitable for fitted tablecloth and chair cover

Wide colour range available

Hotel:

Grand Mercure Yangon, Sheraton Danang APEC event,
Intercontinental BKK, Marriott Surawongse.

Customize colour available



100% Polyester

We have various polyester base material

Q'leesia have local stocks in Malaysia

Value for money

Durable and good product lifespan

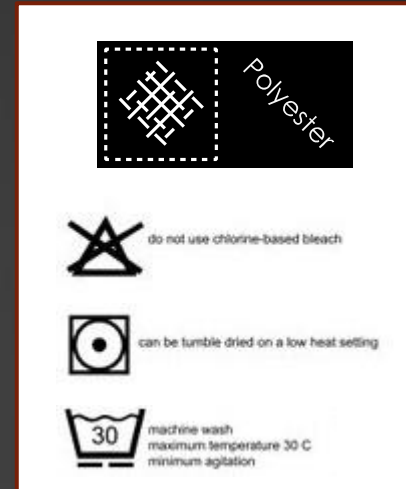
(subjected to laundry process)

Material weight- 230-285gsm

Hotel:

Sedona Hotel Yangon, Four Points Danang, Marriott Marquis BKK

Customize colour available



Clients in Thailand



PARK HYATT BANGKOK™



PLAZA ATHENEE BANGKOK
A ROYAL MERIDIEN HOTEL

